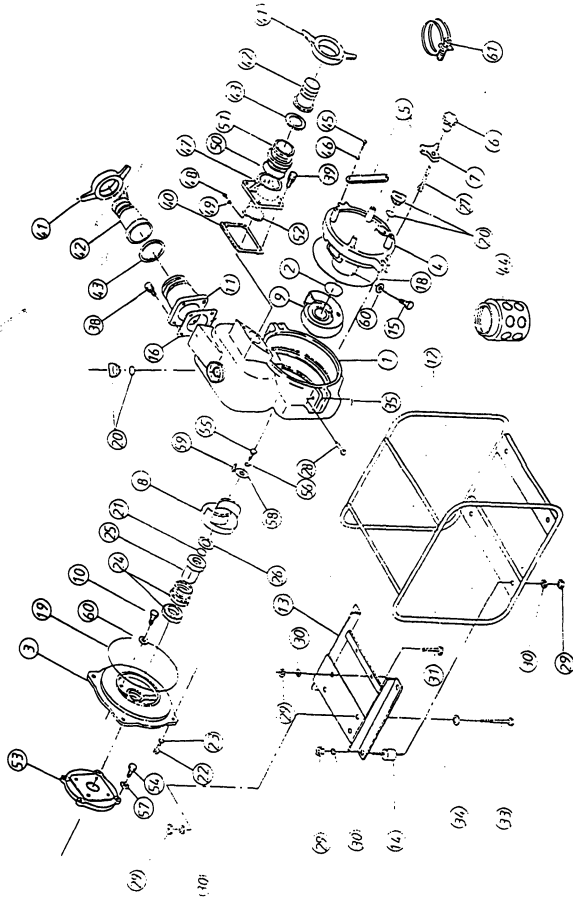


MITSUBISHI ENGINE PUMP

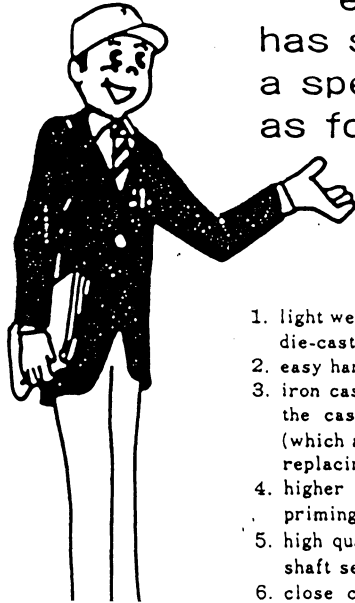
MPT080



MITSUBISHI
HEAVY INDUSTRIES, LTD.
NAGOYA MACHINERY WORKS

We appreciate very much your kind application of engine pump, that has been designed and developed under our long experience and original engineering technology in the pump industry.

Please read carefully the contents of this manual for better and durable performance to be attained by the QP engine pump.



engine pump
has such
a special feature
as follows:

1. light weight, rust-proof aluminum die-casting housing.
2. easy handling portable type.
3. iron cast volute casing is set in the casing, and interchangeable (which assures the longer life by replacing the volute casing alone)
4. higher suction lift and short priming time.
5. high quality mechanical seal for shaft sealing.
6. close coupled with non misfire

BEFORE STARTING

A) Installation

When installing a centrifugal pump, always remember that the closer the pump is placed to the source of supply, the better will be its performance. To ensure maximum capacity, select a site that will permit the use of shortest and most direct suction piping, and smallest possible vertical lift.

Set pump on a foundation as firm and level as possible (as inclined installation over than 15 degrees may sometimes cause engine burning, and the higher the suction lift is, the more pumping capacity will be reduced).

B) Lubrication

Fill the engine crank-case through lubricating oil hole with mobil oil (No. SAE-30 in summer, SAE-20 in winter season) to the level marked on indicator.

C) Fuel

Use non-leaded gasoline for automobiles.

D) Suction Piping

Make certain that the packing is placed in the seat of hose coupling, and all the suction piping line is perfectly free from leak of air.

Also, make it certain that the suction piping line is laid gradually descending from the pump to the source of supply to avoid possible air reservoir through the line, and must be ended with required strainer.

E) Do not try to connect seriously.

F) Please arrange to set a check valve at the delivery end, when so required to apply for shut-and-open application by a cock set at the delivery piping.

OPERATION

A) Remove the flooding cap at the top of the delivery, and set it again tightly after filling up the casing with prime water. (Open the gate valve on the delivery line, if so fitted.)

USE OF TROUBLE & REMEDY

- B) Open the fuel cock, and close the engine choke, when the engine is cooled down, or not worked for a long time. (Open the engine choke gradually, when engine starts.)
- C) It will start to pump in a while as soon as the engine runs at the rated speed (which is attained when the engine speed control lever is set to the end of opposite position).
- D) engine pump is self-priming type, and no more priming is required as long as the casing is filled with water.

FINISHING

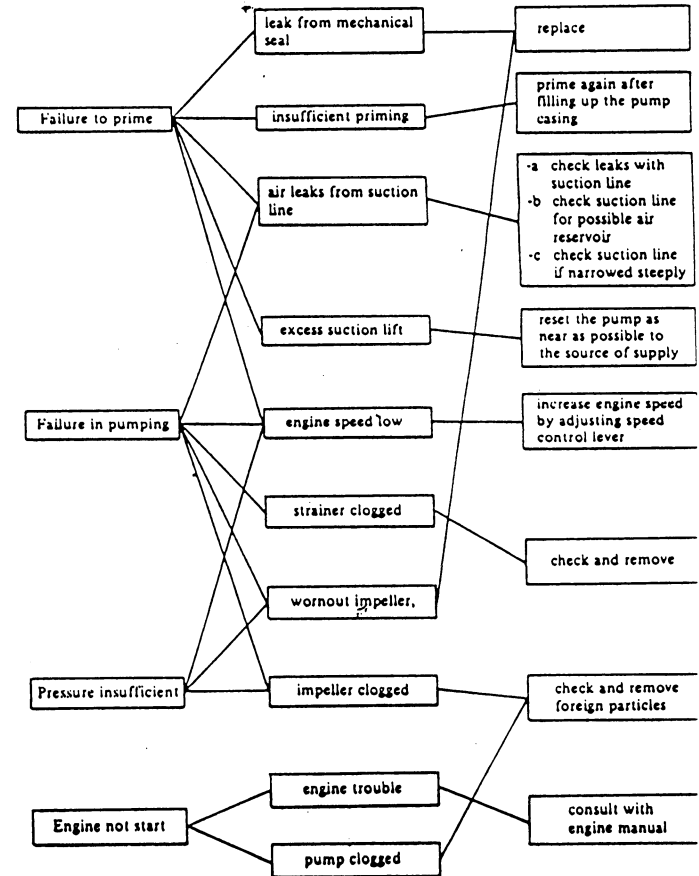
- A) Press down the stop button until the engine stops. (Slow down the engine speed, when driven at high speed, then stop the engine.)
- B) Close the fuel cock without fail.
- C) Drain the pump casing completely under freezing weather. (Drain in the pump may cause damage the pump by freezing.)

MAINTENANCE

- A) Keep dry the pump inside completely.
- B) Keep the engine well covered from rain and dust.
- C) Handle with care.
- D) Remove fuel for long time storage.
- E) Keep the engine at its compressing stroke (where it gets loaded) for storing long time.

Remarks:

- The engine life is determined mostly by oil checks. Please make it a rule to check the oil before starting engine.
- Please change the oil completely after 20 hours works with new pump set.
- Fill the pump with water whenever drive the engine. (Dry running will damage the mechanical seal.)



MPT-080G-M01 (MHI STD)

NO.	MHI PARTS NO.	PARTS NAME	Q'TY
	←	ENGINE	1
1	KY60001AA	CASING	1
2	KY60005AA	O-RING	1
3	KY60007AA	CASING COVER	1
4	KY60011AA	DRAIN COVER	1
5	KY60013AA	DRAIN COVER HANDLE	2
6	KY60015AA	DRAIN COVER SET HANDLE	2
7	KY60016AA	DRAIN COVER PUSH PLATE	2
8	KY60017AA	IMPELLER	1
9	KY60019AA	VOLUTE CASING	1
10	KY60021AA	BOLT	4
11	KY60023AA	DELIVERY COVER	1
12	KY60027AA	BASE	1
13	KY60029AA	ENGINE BASE	1
14	KY60031AA	CUSHION RUBBER	4
15	KY90097AA	BOLT	2
16	KY60032AA	DELIVERY PACKING	1
18	KY60035AA	O-RING	1
19	KY60036AA	O-RING	1
20	KY60037AA	FLOODING/DRAIN CAP	2
20	KY60038AA	O-RING(FLOODING/DRAIN CAP)	2
21	KY60039AA	O-RING	1
22	KY60040AA	BOLT	4
23	KY60041AA	SPRING WASHER	4
24	KY60042AA	MECHANICAL SEAL	1
25	KY60043AA	MECHANICAL SEAL SLEEVE	1
26	KY60044AA	ADJUST LINER	1
26	KY60045AA	ADJUST LINER	1
27	KY60046AA	HINGE BOLT	2
28	KY60047AA	HINGE PIN	2
29	KY60048AA	NUT	14
30	KY60049AA	SPRING WASHER	14

33	KY60051AA	BOLT	4
34	KY60052AA	WASHER	4
35	KY60053AA	SPLIT PIN	2
38	KY60054AA	BOLT SET WITH SPRING WASHER	4
39	KY60055AA	BOLT SET WITH SPRING WASHER	4
40	KY60057AA	SUCTION COVER PACKING	1
41	KY60058AA	HOSE COUPLING	2
42	KY60059AA	HOSE JOINT	2
43	KY60062AA	HOSE COUPLING PACKING	2
44	KY60064AA	STRAINER	1
45	KY60066AA	SCREW	4
46	KY60067AA	SPRING WASHER	4
47	KY60068AA	SUCTION COVER	1
48	KY60070AA	SCREW	2
49	KY60071AA	WASHER	2
50	KY60072AA	O-RING	1
51	KY60073AA	NIPPLE	1
52	KY60075AA	CHECK VALVE	1
53	KY60077AA	CASING COVER SET PLATE	1
54	KY60078AA	BOLT	4
55	KY60079AA	BOLT	1
56	KY60041AA	SPRING WASHER	1
57	KY60049AA	SPRING WASHER	4
58	KY60081AA	IMPELLER WASHER	1
59	KY60082AA	KEY	1
60	KY60084AA	SEAL WASHER	4
61	KY60085AA	WIRE HOSE BAND	3
62	KY60088AA	HANDLING MANUAL	1
63	KY60092AA	CFB (CARTON)	1